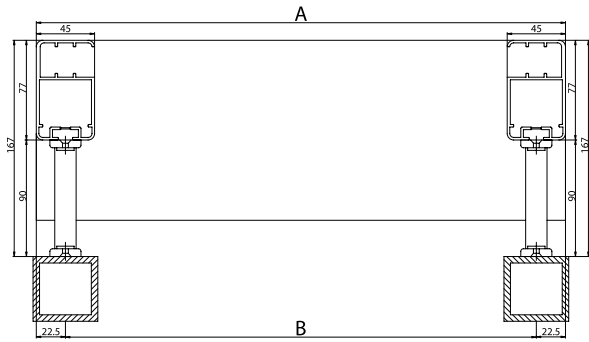


Technische Informationen

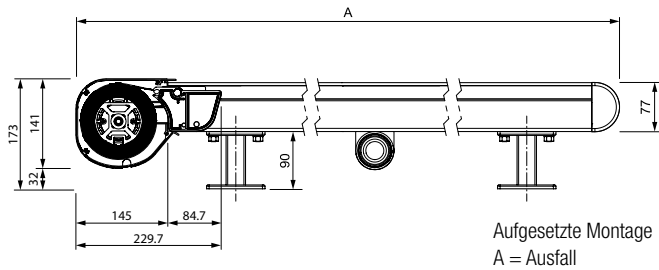
AIROMATIC PS4500



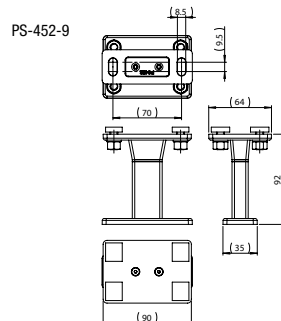
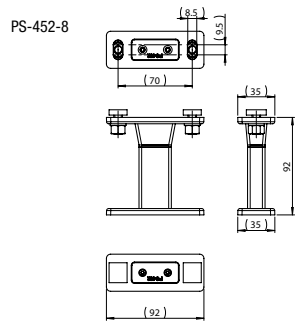
Totalbreite:
min. 100 cm
max. 600 cm

Ausfall:
min. 150 cm
max. 600 cm

A Totalbreite = Achsabstand Wintergartensprossen + 45 mm
B Achsabstand Wintergartensprossen



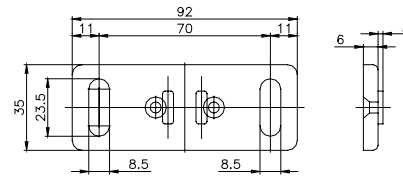
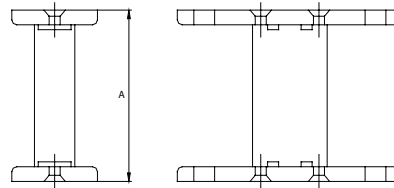
Aufgesetzte Montage
A = Ausfall



B-Winkel

PS-452-1 A= 90 mm

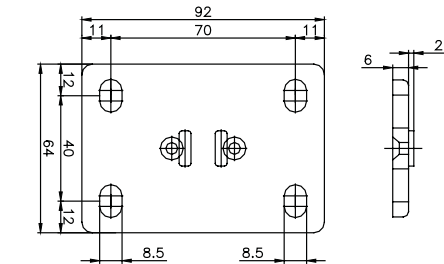
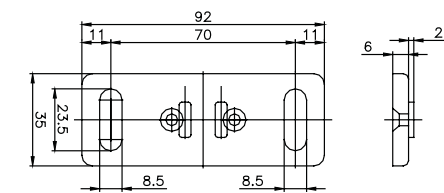
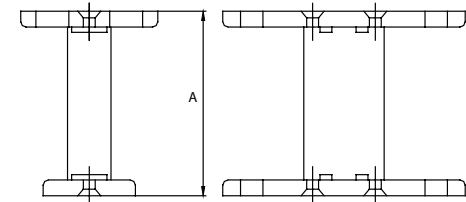
PS-452-3 A= Höhe nach Maß (max. 200 mm)



Doppel-B-Winkel

PS-452-2 A= 90 mm

PS-452-4 A= Höhe nach Maß (max. 200 mm)



B-Winkel PS-547

Standard «verstärkt»

Höhe nach Maß (max. 350mm)

